

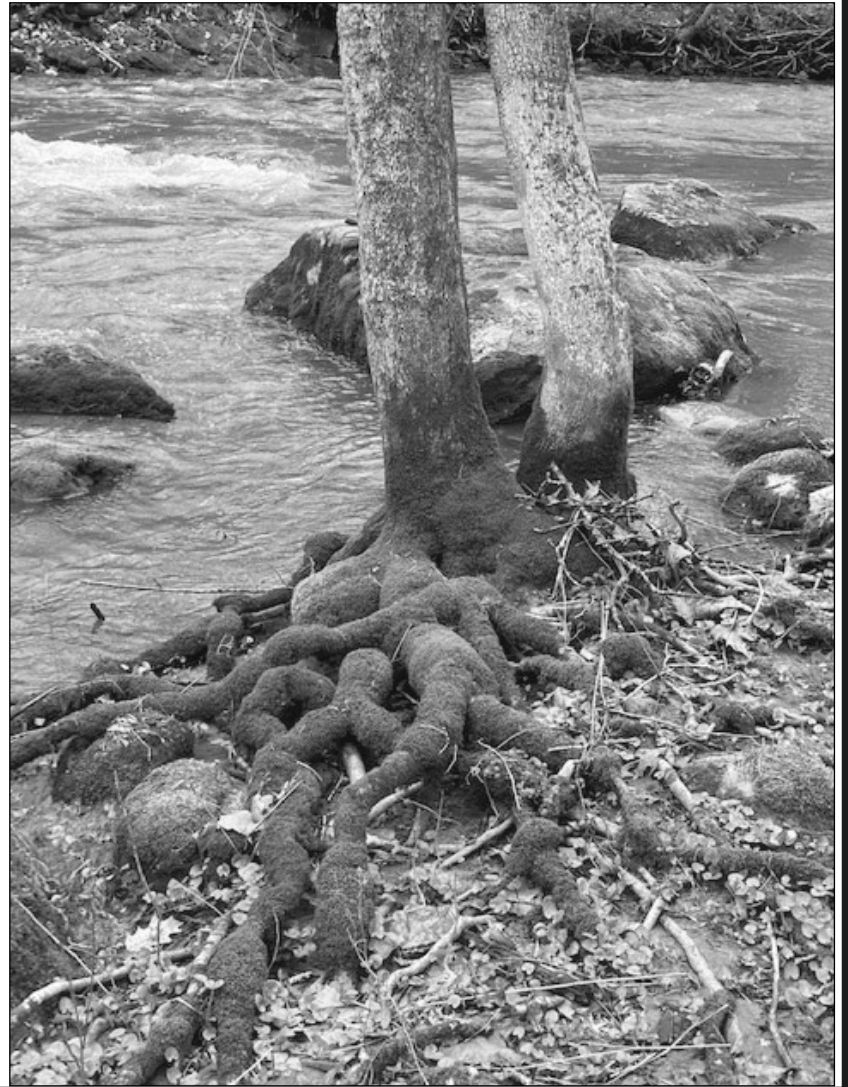
# Hunterdon County Parks Harbinger

Summer 2023

Programs in June, July & August



Let's step out  
& explore  
our parks!



## TABLE OF CONTENTS

2-3	Free Concert Series	9	Homeschool Nature Programs
4	Canoeing & Kayaking	10	Basketry and Other Crafts
5	Recreational Walking Series	11	Make-It, Take-It Craft Programs
6	Family Nature Weeks	12	Information Page
7	Adult Hiking Week and Webinars	13	Medical Forms
8	Nature Programs	14	Program Registration Form

## Hunterdon County Division of Parks & Recreation

Department of Administrative Services

**Mailing Address:** P.O. Box 2900, Flemington, NJ 08822-2900

**Office Location:** 1020 State Highway 31, Lebanon, NJ

**Telephone:** (908) 782-1158 · **Fax:** (908) 806-4057

**Email:** parks@co.hunterdon.nj.us

**Website:** www.co.hunterdon.nj.us/479/Parks-Recreation



# 2023 Free Concert Series

Thursdays: six concerts: June 29, July 13, July 20, July 27, August 3, & August 10  
7:00 PM to 9:00 PM  
Deer Path Park

all ages (children must be accompanied by an adult)  
free (no pre-registration required)



Join us this summer, bring your friends and family, maybe a picnic dinner, your blanket and lawn chair, and enjoy the music and the sunset!

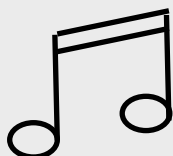
**Have Fun, Be Safe, and Be Considerate Of Others:** Our concert series is family oriented; be considerate of others so everyone may enjoy the music and the natural surroundings. If you smoke, make sure the smoke does not bother anyone else. Always keep children in sight for safety and so that they do not disturb others. Remember some people are afraid of dogs; observe our leash law and always keep pets under control. Alcoholic beverages are **not** permitted!

**Rainy Day Concert Information:** Weather conditions may dictate that we move the concert inside; the decision will be made the afternoon of the concert day. To find out this information, go to our county website: [www.co.hunterdon.nj.us](http://www.co.hunterdon.nj.us) or call the park office, after 4:30 PM, and listen to the recording (908) 782-PARK (7275). Indoor concerts will be held at Hunterdon Central Regional High School, 84 Route 31, Flemington NJ, 08822.

**Directions To Deer Path Park:** 120 West Woodschurch Rd Flemington, NJ 08822.  
**From the Flemington Area:** take Route 31 North for approximately 4 miles. Turn right onto West Woodschurch Road and follow the signs to Deer Path Park.  
**From the Clinton Area:** US Interstate 78, take Route 31 South for approximately 6.5 miles. Take right jug handle onto West Woodschurch Road and follow the signs to Deer Path Park.



Made possible by funds from the Hunterdon County Cultural & Heritage Commission, a partner of the New Jersey State Council on the Arts.



## 47th Music Under The Stars

### **June 29 The Hunterdon Symphony Orchestra**

"Broadway is Back!" The Hunterdon Symphony has performed nearly 300 concerts since its founding in 1980. In "Broadway is Back!", the theme of this year's concert, the Symphony will perform highlights from West Side Story, Wicked, and Les Misérables, among many of your all-time favorites. [www.hunterdonmusicalarts.org](http://www.hunterdonmusicalarts.org)

### **July 13 Captain Jack Band**

Billy Joel Tribute band consists of some of the tri-state area's top musicians. The band captures the live concert arrangements of these timeless hits which captivated tens of thousands. Every event is packed with all the energy, passion, and interaction of a Billy Joel concert and is represents three decades of Billy's music in every Captain Jack show. [www.captainjacktributeband.com/](http://www.captainjacktributeband.com/)

### **July 20 The Best Of The Eagles**

The Best of the Eagles is the most exact interpretation of the music of the Eagles in America, bar none! Each member mirrors his counterpart in the Eagles instrumentally and vocally. However, this is no simple copy band but rather a group of excellent musicians who expertly and authentically re-create the songs, the music, the vocals, and the magical aura of one of America's greatest rock bands. You will not want to miss this concert. [www.ultraartists.com](http://www.ultraartists.com)

### **July 27 Country Comfort**

Country Comfort plays hits from today's top country artists with the occasional classic favorite thrown in. They perform contemporary country hits all around northern New Jersey since 2011. Strong male and female vocal performances, duets, and captivating harmonies - every performance turns into a country party, with a very active dance floor. Winners of the 2014 NASH FM 94.7's Battle of The Country Bands & opened for Sara Evans & Craig Morgan at Six Flags Great Adventure.

### **August 3 Amish Outlaws**

In the Amish tradition, called "Rumspringa" (running around) at age 16 they can live free of the strict Amish code, before deciding if they want to be baptized into the Amish church. Surprisingly, virtually all the youth's return. But sometimes they don't. Four of the original six members had a strict Amish upbringing. No electricity from land lines, no alcohol, no musical instruments, but their spirits were too wild for the Amish lifestyle. Once they trampled in the devil's playground, there was no turning back becoming well acclimated to the pleasures and vices of the modern world... music, most of all. From Johnny Cash, JayZ, Lady Gaga, Bon Jovi & Elvis, they will entertain you! <https://amishoutlaws.com/>

### **August 10 The Hunterdon Harmonizers**

The Hunterdon Choral Alliance returns to "Music Under the Stars" with over 70 singers belting out pop hits from the radio and the stage! Delivering their big sound in the traditional barbershop style. Vocal synergy is pleased to share selections from their recent Carnegie Hall debut, where they recently performed with Deke Sharon, the musical producer of the "Pitch, Perfect" movies as well as TV's acclaimed competition show, "The Sing-Off". Also to be joined by new vocal groups sure to have you humming and grooving along. <https://www.njharmonizers.org/>

## Canoeing & Kayaking: Flat Water Paddles

Instructor Patrick Eckard, Recreation Program Coordinator  
children must be accompanied by adult



We provide your choice of one of our canoes, or tandem or solo paddling, or solo in one of our kayaks (please mark your choice on your Registration Form). Our trained staff is focused on safety, fun and will be at hand to share their knowledge about these crafts and the techniques of handling them. All participants must always wear a provided lifejacket.

**Please Note:** Hunterdon Parks reserves the right to change the location of the Pond Paddles due to possible water conditions caused by natural issues such as algae bloom. You will be notified prior to the date if a change is necessary.

### Hoffman Pond Paddle

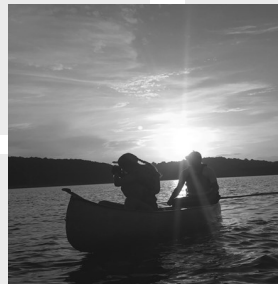
Saturday, June 24,

**Session A:** 9:00 AM to 11:00 AM

**Session B:** 12:00 PM to 2:00 PM

Hoffman Park (26 Baptist Church Rd, Hampton NJ 08827), ages 8 and up, \$20

Have a hankering to enjoy a leisurely paddle and commune with nature, meet park staff in the Hoffman Park parking lot. The group will walk down to, paddle around, and enjoy the beautiful nature offered by Manny's Pond. A short safety talk will be included. You can simply enjoy a paddle around the pond or staff will be offering a lesson on paddling techniques which will help when you practice maneuvering the craft on the water. Join some fun water games that will help you fine tune the strokes. Please mark on your Registration Form, your choice of a canoe (tandem or solo) or a solo kayak & your choice of Session A or B time slots.



### Sunset Paddle on Round Valley Reservoir

Friday, July 14, 6:00 PM to 8:30 PM,  
Round Valley Reservoir Boat Launch  
(County Rd 629, Lebanon, NJ 08833),  
ages 8 and up, \$20

Treat yourself to a guided sunset paddle. Meet at Round Valley Reservoir at the boat launch. A short safety talk will be included. Bring a flashlight and an extra jacket; it's cooler by the water when the sun goes down. Please mark on your Registration Form, your choice of a canoe (tandem or solo) or a solo kayak.

### Teetertown Pond Paddle

Saturday, August 5,

**Session A:** 9:00 AM to 11:00 AM

**Session B:** 12:00 PM to 2:00 PM

Teetertown (30 Pleasant Grove Road, Port Murray 07865), ages 8 and up, \$20

Have a hankering to enjoy a leisurely paddle and commune with nature, meet park staff in the Teetertown parking lot. The group will walk to, paddle around, and enjoy the beautiful nature offered by the Teetertown pond. A short safety talk will be included. You can simply enjoy a paddle around the pond or staff will be offering a lesson on paddling techniques which will help when you practice maneuvering the craft on the water. Join some fun water games that will help you fine tune the strokes. This is a great opportunity to expose yourself, a youth, and/or friends and family to this exciting sport. Please mark on your Registration Form, your choice of a canoe (tandem or solo) or a solo kayak & your choice of Session A or B time slots.

# Recreational Walking Series

Instructor Liz Braidwood-Fulmer, Recreation Program Coordinator

Registration Instructions: **Pre-registration required.** Submit our registration and medical forms by email to parks@co.hunterdon.nj.us, mail to P.O. Box 2900, Flemington, NJ 08822, or drop off at the Hunterdon County Arboretum, 1020 State Highway 31, Lebanon, NJ 08833. Please be considerate of others... we often have a waiting list, so if you are unable to attend a hike, please call our office to alert our staff as soon as possible at (908) 782-1158. Thank you!

## Clip, Pick And Stroll \*New

Wednesdays, 9:30 AM to 11:00 AM, for adults, free.

During these walks you can help to beautify the county park trails and help control invasive plants. The group will “clip,” prune back the plant growth, and “pick,” pick up the litter while taking a stroll with likeminded folks. No restroom facilities available. Please wear sturdy footwear and dress for the weather.

**June 7: Charlestown** (40 Charlestown Road, Hampton)

**July 12: Point Mountain** (80 Point Mountain Road, Lebanon Twp.)

**August 9: Jugtown Mountain Nature Preserve** (408 Mine Road, Asbury, Bethlehem Twp.)



## Senior Stroll at Deer Path Park

Wednesday, June 28, 9:30 AM to 11:00 AM, Deer Path Park, 120 West Woodchurch Road, Flemington, Readington Township, adults, free.

Let's explore the one-mile fitness trail that consists of 15 different exercise stations (we could give them a try or not!). The stations offer a balanced program of strength, endurance, and coordination exercises. Type of walking surface: flat, dirt, and grassy paths.

## Senior Stroll at Columbia Trail

Wednesday, July 19, 9:30 AM to 11:00 AM, High Bridge Borough's Common Park, 79 Main Street, High Bridge, adults, free.

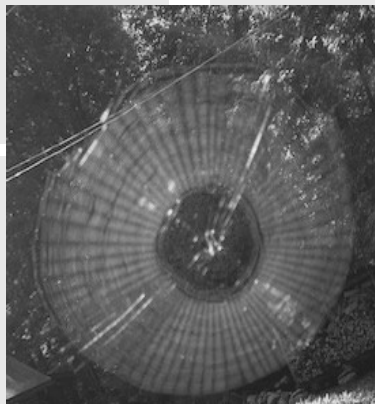
Let's walk and talk-about a once busy railroad, now a busy trail. How things have changed.

## Senior Stroll at Point Mountain

Wednesday, August 16 9:30 AM to 11:00 AM, 80

Point Mountain Road, Lebanon Township, adults, free.

We will take a stroll along the Musconetcong River and listen to the babbling as the water descends over the rocks. Breath in the fresh air and enjoy the company of your fellow walkers.



## Walks for Fun

Tuesdays, 5:30 PM to 7:30 PM, ages 12 through adults (children must be accompanied by an adult), free.

Join us for a little exercise in the evening light. Please note: No restroom facilities available. Please wear sturdy footwear and dress for the weather.

**June 27: Echo Hill**, 42 Lilac Drive, Flemington 08822

**July 25: Sunnyside**, 47 Kiceniuk Road, Annandale 08801, Clinton Twp.

**August 29: Hoffman**, 751 Mechlin Corner Road, Hampton 08827

## Family Nature Weeks

maximum class size 10 children  
pre-registration required



### Tot Walk Week

**Session A:** Monday through Friday,  
July 24 to 28, 9:30 AM to 10:30 AM

**Session B:** Monday through Friday,  
July 24 to 28, 11:00 AM to 12:00 PM

**Session C:** Monday through Friday,  
August 7 to 11, 9:30 AM to 10:30 AM

**Session D:** Monday through Friday,  
August 7 to 11, 11:00 AM to 12:00 PM

Echo Hill, ages 2 to 3 with adult (children must be accompanied by an adult), \$25 per child; accompanying adult attends for free, instructor Laura Bush, Principal Park Naturalist.

Discover nature at your local park! Leave the strollers behind and get outside to learn about the nature around us. Each day we will read a book, take a walk, and do a craft on a different theme. Dress for the weather as we plan to be outside even in light rain. Please bring a water bottle.

Please select  
Session A, B, C, or D.



### Family Nature Bugs Week

Monday through Friday, July 10 to 14, 9:00 AM to 11:30 AM, Echo Hill, ages 4 to 6 with adult (children must be accompanied by an adult), \$125 per child; accompanying adult attends for free, instructor Debra Reed, Park Naturalist.

The Nature Bugs program is the perfect half-day adventure for your young nature enthusiast. Our full-time naturalists will teach about local plants and animals through hikes, observations, crafts, and games. A safe and fun way to foster your child's interest in the natural environment. Dress for the weather as we plan to be outside even in light rain. Bring a snack and refillable water bottle.

### Family Nature Discovery Week

Monday through Friday, July 31 to August 4, 9:00 AM to 11:30 AM, Echo Hill, ages 7 to 10 with adult (children must be accompanied by an adult), \$125 per child; accompanying adult attends for free, instructor Debra Reed, Park Naturalist.

This program allows families to explore together many of the wonders that nature has to offer. From searching for wildlife to shelter building, Family Nature Discovery participants enjoy honing their outdoor skills. Dress for the weather as we plan to be outside even in light rain. Please bring a snack and refillable water bottle.



### Twilight Adventure Week

Monday through Friday, August 14 to 18, 7:30 PM to 9:00 PM, Echo Hill, ages 5 to 10, \$125 per child; accompanying adult attends for free, instructor Debra Reed, Park Naturalist.

Explore Echo Hill during twilight hours to learn what happens when the sun goes down and the nocturnal creatures wake up. Spend the week taking night hikes, doing nighttime activities, science experiments, and games. We will end the week with a campfire.



## Adult Hiking Week



### Adult Hiking Week

Monday through Friday, July 17 to 21, 9:00 AM to 11:00 AM, see below for various locations, 15 through adult (minors must be accompanied by an adult), \$25 per person (adults and teenagers), instructor Laura Bush, Principal Park Naturalist.

Explore your County parks with Principal Park Naturalist Laura Bush! Each day, we will meet at a different park and do a moderate to strenuous hike. We will enjoy some exercise, build relationships, and learn about local flora and fauna. **Dress for the weather as we plan to be outside even in light rain.** Bring a water bottle, note many of these locations do not have bathrooms.

Meeting locations:

**Monday, July 17:** Uplands, meet at Bernadette Morales Preserve, 103 Capner Street, Flemington (Raritan Twp.)

**Tuesday, July 18:** Union Furnace, 15 Van Syckles Road, Clinton 08809 (Union Twp.)

**Wednesday, July 19:** Jugtown Mountain Nature Preserve, 408 Mine Road, Asbury, NJ 08802 (Bethlehem Twp.)

**Thursday, July 20:** Charlestown Reserve, 410 Charlestown Road, Hampton 08827 (Bethlehem Twp.)

**Friday, July 21:** Miquin Woods, 326 Newport Road, Glen Gardner 08826 Lebanon Township)

## Nature Programs Free Webinars

Tom Sheppard, Chief Park Naturalist

### Aquatic Mammals of the County

Wednesday, June 28, 7:00 PM to 8:00 PM, virtual program, ages 10 and up.

Let's explore the four unique mammals of Hunterdon County that call our waterways and ponds home. Through slides, Tom will give you a feeling of size and insight into the lives of muskrats, beavers, mink, and river otters and how they co-exist with us.

### What Worries A Naturalist

Wednesday, July 26, 7:00 PM to 8:00 PM, virtual program, ages 10 and up.

What types of animals including insects, or plants worry a naturalist? Learn about what Tom sees as the "hazards of Hunterdon County." Covered are some of the common concerns like poison ivy, ticks, and bears, but there are other items to think about when you head out into the woods. Questions and comments are welcomed.

### 10 Survival Strategies of Mammals

Wednesday, August 16, 7:00 PM to 8:00 PM, virtual program, ages 10 and up.

It is an easy statement to make that wild mammals do not have an easy life while living next to humans. Well how do they survive and live next to us? This program is not meant to be an in depth study into any one species but discusses ten things that our Hunterdon mammals are doing to ensure that they can survive and co-existing next to humans.

### To Register:

visit our webpage  
<https://nj-huntedoncounty.civicplus.com/2715/Nature-Webinars>



## Nature Programs

pre-registration required - children must be accompanied by an adult

### Flickering Fireflies & Campfire

Sunday, June 4, 8:00 PM to 9:30 PM, Teetertown (30 Pleasant Grove Road, Port Murray), ages 4 through adult, free, instructor Debra Reed, Park Naturalist.

As dusk settles, come watch the sparkling lights of fireflies appear as we learn how and why they light up. We will take to the fields with nets to catch some to study up-close. We may also see or hear some other nocturnal insects. Afterwards we will sit around the campfire to enjoy the wonders of our park at night.

### Walk for Breeding Birds

Friday, June 9, 8:30 AM to 12:00 PM, Point Mountain (80 Point Mountain Road, Port Murray), ages 12 and up, \$6 per person, instructor Tom Sheppard, Chief Park Naturalist.

We will traverse a little over two miles of the trail system. We will be looking for our avian friends as we walk along the river and then head up onto the ridge. We will make stops to view our feathered friends or as needed as we hike up to and along the ridge. Please understand that this is a moderate to difficult hike and with a 500-foot descent using rock steps near the end of the hike. (Binoculars will be available for loan.

### Nature Walk at Miquin Woods

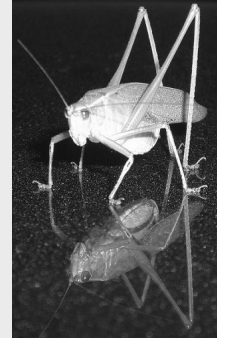
Thursday, July 13, 9:00 AM to 11:30 AM, Miquin Woods (326 Newport Rd., Glen Gardner), adults, \$6 per person, instructor Tom Sheppard, Chief Park Naturalist.

Walk on the far side of the Spruce Run River. We will walk on the Yellow Trail which runs through an open woodland. Along the way, we will discuss some of the ferns that can be found along the trail

and anything else that we find, or the group asks about. The trail is considered a moderate hike and certain spots can be wet and/or soft ground.

### Nocturnal Insects

Thursday, August 3, 7:30 PM to 9:00 PM, Assembly Room, Building 1 (314 State Route 12, Flemington NJ 08822, Raritan Township, same complex as the Hunterdon Route 12 Library), ages 8 through adult, free, instructor Laura Bush, Principal Park Naturalist.



Nature after dark is fascinating! Katydid sing, cicadas emerge, and wolf spider hunt. The first hour of the program will be devoted to a lecture to learn about insects that are active at night in the summer. We will hear calls and learn about how they make their sounds. Then we will do a walk outside to listen and look for insects!

### Mercury At Its High Point

Friday, August 11, 7:30 PM to 8:30 PM, Hoffman Park (Baptist Church Road), ages 10 and up, free, instructor Tom Sheppard, Chief Park Naturalist.

Let's attempt to view Mercury, one of the five visible planets that can be seen with the naked eye. It is the hardest one to view, being so close to the Sun. Mercury will be near its highest angle from the Sun on this day. We will also look for Mars also. You will have the chance see the difference between an "Inferior Planet" and "Superior Planet."







## Beaver Dam Engineering Challenge

Tuesday, August 15, 6:00 PM to 7:00 PM, Assembly Room, Building 1 (314 State Route 12, Flemington NJ 08822, Raritan Township, same complex as the Hunterdon Route 12 Library), ages 5 through adult recommended (children must be accompanied by an adult), \$10 per project (pre-registration required), instructor Laura Bush, Principal Park Naturalist.

Learn about Ms. Laura's favorite animal, the North American Beaver. They are the largest rodent in New Jersey, weighing up to 60 pounds! They are built for life in the water with unique adaptations like webbed back feet, thick waterproof fur, and special clear eyelids so they can see while closing their eyes underwater. After a short PowerPoint on cool facts about beavers, you will have the opportunity to use engineering skills to build a model of a beaver dam! Cost is per project; each person should sign up for their own project, or a family unit can sign up for one and work together.



## Home School Series: Insects

- pre-registration required
- children must be accompanied by an adult.
- Tom Sheppard, Chief Naturalist

### Insects In A Grassland

Wednesday, June 14, 1:00 PM to 2:00 PM, Hoffman Park, ages 7 and up, free.

We will explore and collect our insect from the edge of the fields that we can safely access along the trail system at Hoffman Park. Once we have collected our samples, we will go over them and discuss what makes an insect an insect, what family group they are in and why some of our samples may not be insects.

### Nymphs In The Pond

Wednesday, July 12, 1:00 PM to 2:30 PM, Hoffman Park, ages 7 and up, free.

We will collect samples from the edge of Manny's pond. When we review our collection, we will compare some of their features to the insects caught during the previous field study. We will start exploring the life cycles of these insects and what their presence in the water means. Please note the extra half hour to the class, which is needed for the walk back and forth between the pond and the parking area.

### Critters In The Creek

Wednesday, August 9, 1:00 PM to 2:30 PM, Wescott Preserve – Raven Rock Road, ages 7 & up, free.

For this program we need to change our location completely and move to Wescott Preserve in Delaware Township. We will conduct a stream study in the Lockatung Creek and continue our study of aquatic insects and their life cycles. Please note the extra half hour to the class which is needed to walk back and forth between the creek and parking area.

# Basketry & Other Adult Craft Workshops

Instructor Liz Fulmer, Recreation Program Coordinator

## Cute Little Wax Linen Basket

Monday, June 5, 9:00 AM to 2:00 PM,  
Deer Path Park in Cedars Pavilion, adults,  
\$15 (pre-registration required).

Using wax linen thread, make a one berry basket... approximately  $\frac{3}{4}$  inches in diameter and  $1 \frac{1}{2}$  inches high, including the handle. Makes a nice charm for a necklace, a holiday ornament, or it will fit in a shadow box as a decoration. Lots of fun exploration with colors & embellished with beads. Good eyesight helpful, bring your glasses. Some basket making experience helpful, bring lunch and drink.

## Lavender Wand

Thursday, July 6, 12:00 AM to 3:00 PM,  
Deer Path Park, in the Cedars Pavilion,  
adults , \$15 (pre-registration required).

Learn how to weave a fragrant bundle of lavender into a pretty wand. Lavender is used in aromatherapy for its relaxing qualities. Slide your wand under your pillow... sweet dreams. Makes a cute gift.

## One-Two-Three Twill

Saturday, July 8, 8:30 AM to 4:00 PM, Assembly Room,  
Building 1 (314 State Route 12, Flemington NJ 08822,  
Raritan Township, same complex as the Hunterdon Route 12 Library), adults, \$37.

Create a square herringbone weave base using  $\frac{1}{4}$ " flat reed. Turn up into a cathead shape base. Weave the sides in a one-two-three twill pattern. Finished diameter approximately 9 inches. Bring your lunch and drink. **HOMEWORK:** Students will need to finish their basket at home, cut and tuck and lash on the rim. Skill Level: **advanced students only.**



## UFO Class: Unfinished Objects

Tuesday, July 18, 12:00 AM to 3:30 PM,  
Deer Path Park, in the Cedars Pavilion,  
adults, free (pre-registration required).

Do you have a craft project, such as, but not limited to a basket that is not finished? Join us for some open weave time.



## Mail Pouch

Wednesday, July 26, 12:00 AM to 3:30 PM, Deer Path Park, in Cedars Pavilion, adults, \$15 (pre-registration required). Skill Level beginner to advanced.

Make this sweet basket that hangs on a door or wall. It's designed to hold envelopes... your mail. Measures approximately 8" wide x 6" tall x  $1 \frac{1}{2}$ " deep.

## More Baskets & Crafts

Instructor Liz Fulmer, Recreation Coordinator

### Make A Broom

Wednesday, August 2, 9:00 AM to 4:00 PM,  
Assembly Room, Building 1  
(314 State Route 12,  
Flemington), adults, \$35

Make a Harry Potter broom... a full-size broom with a funky shaped wooden stick handle. Participants will learn how to wrap, using nylon string, broom corn onto the handle and how to flatten and sew the broom.

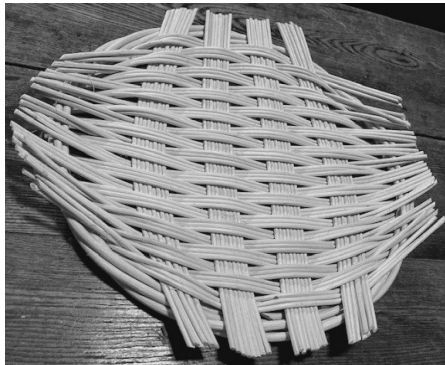


### Tension Tray

Tuesday, August 29,  
1:00 AM to 4:00 PM,  
Hoffman Park (26 Baptist  
Church, Hampton, 08827),  
adults, \$13, Skill Level:  
Beginner to advance

Using rattan and/or wisteria vines, we will create a tray that holds together by tension.

\*You might also like to register for Walk for Fun, 5:30 PM to 7:30 PM to be held at Hoffman Park that same evening.



## Make-It, Take-It Crafts

Mondays, 10:00 AM to 12:00 PM,  
Deer Path Park in Cedars Pavilion,  
ages 6 and up child/adult teams and  
solo adults (children must be  
accompanied by an adult), \$12 per  
child/adult team (pre-registration  
required), instructor Liz Braidwood-  
Fulmer, Recreation Coordinator.

Participants will receive step-by-step instructions as they create these crafts. Workshops will be held under the Cedars Pavilion. Bring a drink and a big smile.

**July 17:** Simple Basket with Beads

**July 24:** Button Tree

**July 31:** God's Eye

**August 7:** Wisteria Ball Yard Art



## Trees- Make Perfect Pets... STORY WALK ®

Take a walk while reading the storybook, *Trees-Make Perfect Pets* written by Paul Czajak and illustrated by Cathy Gendron. Installed from April 15<sup>th</sup> to June 15<sup>th</sup> on the Wizard Trail in the Gardens at the Hunterdon County Arboretum (1020 Route 31 North, Lebanon, NJ, Clinton Township). Our StoryWalk ® is open from dawn to dusk. Created by a partnership between Hunterdon County Parks & Recreation and the Hunterdon County Library. Funding provided by the Friends of the Hunterdon County Library and Hunterdon County Parks and Recreation. The original StoryWalk® project was created by Anne Ferguson of Montpelier, VT and developed in collaboration with Kellogg-Hubbard Library. StoryWalk ® is a registered service mark owned by Ms. Ferguson.

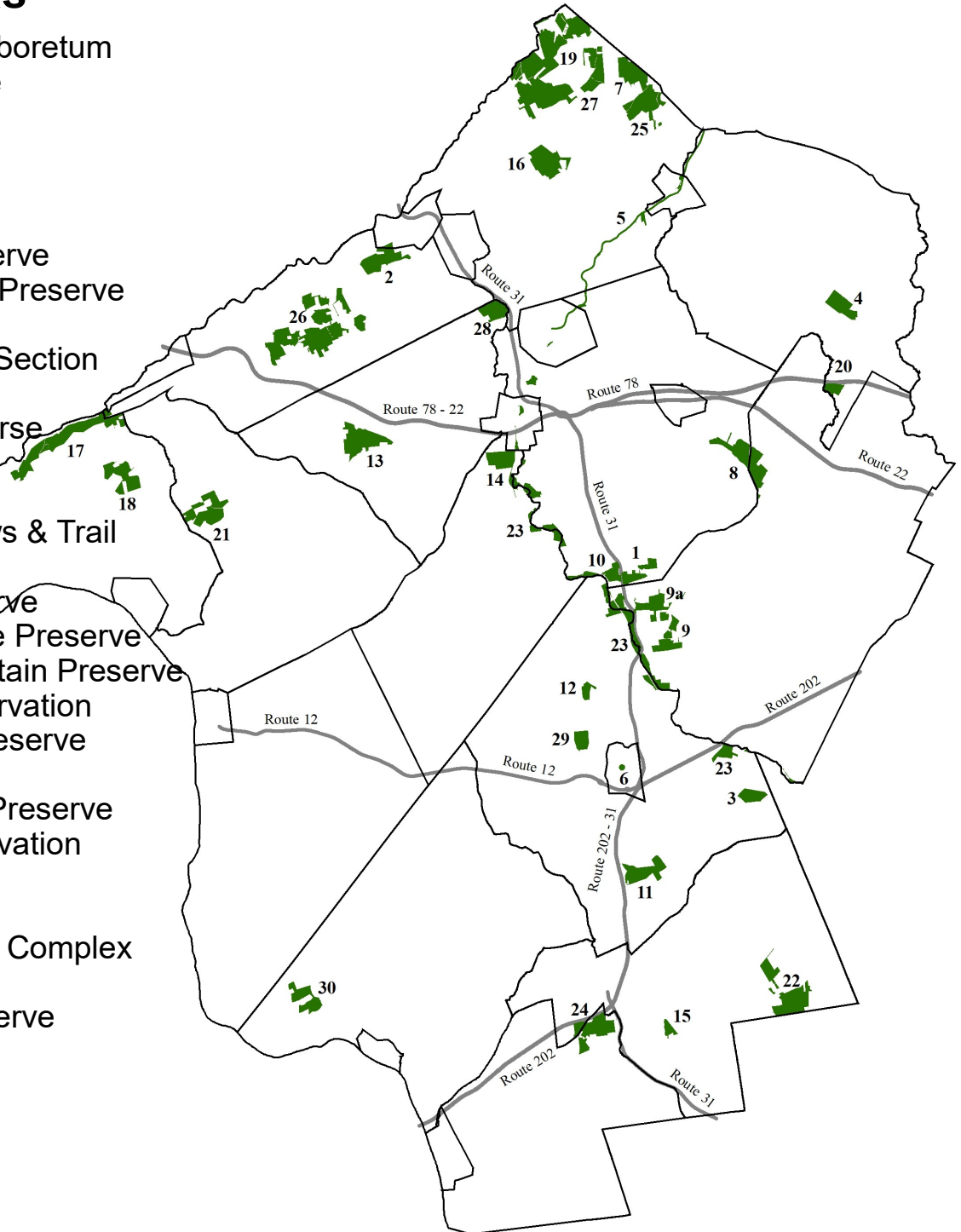
# County Park Areas & Facilities Guide

With the exception of park properties with reservable facilities, all properties are “**carry in / carry out**” and trash/recycling receptacles are not provided. Please plan accordingly and do not leave any trash/recyclables behind.

**Trail Maps are available.** Most park areas with hiking or nature trails have a brochure available. Contact the Park Office or check the website for the brochure and map.

## Park Areas

1. Hunterdon County Arboretum
2. Charlestown Reserve
3. Clover Hill Park
4. Cold Brook Reserve
5. Columbia Trail
6. Court Street Park
7. Crystal Springs Preserve
8. Cushetunk Mountain Preserve
9. Deer Path Park
- 9a. Round Mountain Section
10. Echo Hill Park
11. Heron Glen Golf Course
12. Hilltop Reserve
13. Hoffman Park
14. Landsdown Meadows & Trail
15. Laport Reserve
16. Miquin Woods Preserve
17. Musconetcong Gorge Preserve
18. Musconetcong Mountain Preserve
19. Point Mountain Reservation
20. Rockaway Creek Preserve
21. Schick Reserve
22. Sourland Mountain Preserve
23. South Branch Reservation
24. South County Park
25. Teetertown Preserve
26. Tower Hill—Jugtown Complex
27. Turkey Top Preserve
28. Union Furnace Preserve
29. Uplands Reserve
30. Wescott Preserve



# Area & Facilities

Park Areas		Acreage	Meeting Room*	Biking	Campsites*	Canoe Access	X-Country Skiing	Fishing	Fitness Trail	Gardens	Golf Course	Hiking/Nature Trails	Horseshoe Court	Horseback Riding	Hunting*	Information Boards	Nature Programs	Picnic Pavilions*	Picnic Sites	Playground	Restrooms	Scenic vista	Sledding Area	Soccer/Soccerball Fields*	Office	Gazebo*	Parking		
1	Hunterdon County Arboretum Route 31, Clinton Twp.	135	☒				●		☒			●			●	●	●	●	●		☒				☒	●	●		
2	Charlestown Reserve Charlestown Road, Bethlehem Twp. & Hampton Boro	269		●							●	●			●		●									●	●		
3	Clover Hill Park Clover Hill Road, Readington Twp.	116		●			●						●		●		●									●	●		
4	Cold Brook Reserve Route 517, Tewksbury Twp.	180		●			●						●		●		●									●	●		
5	Columbia Trail Califone & High Bridge Boros, Clinton, Lebanon, & Tewksbury Twp.	108		●			●						●		●		●									●	●		
6	Court Street Park Park Ave & Court St, Flemington Boro	1							●																	●	●		
7	Crystal Springs Preserve Pleasant Grove Road, Lebanon Twp.	232		●			●					●			●		●									●	●		
8	Cushtunk Mountain Preserve Old Mountain Road, Clinton & Readington Twp.	380		●								●			●		●									●	●		
9	Deer Path Park West Woodschurch Road, Readington Twp.	104		●			●		●	●		●	●		●		●	☒	●	●				●		●	●		
10	Round Mountain Section West Woodschurch & Foothill Rds., Readington Twp.	264		●			●		●	●		●	●		●		●							●		●	●		
10	Echo Hill Park Lilac Drive, Clinton Twp.	90	☒	●			●					●			●		●									●	●		
11	Heron Glen Golf Course Route 202/31, Raritan Twp.	241									●																●	●	
12	Hilltop Reserve Sand Hill Road, Raritan Twp.	59	U	N	D	E	V	E	L	O	P	E	D														●	●	
13	Hoffman Park Baptist Church Road, Union Twp.	354		●			●					●			●		●										●	●	
14	Landsdown Meadows Route 617, Franklin Twp.	174										●			●		●										●	●	
15	Landsdown Trail Lower Landsdown Rd., Franklin Twp., & Main St., Clinton Twp.	18		●			●					●			●		●										●	●	
15	Laport Reserve Mountain Road, East Amwell Twp.	49										●			●		●										●	●	
16	Miquin Woods Preserve Newport Road, Lebanon Twp.	302		●			●					●			●		●										●	●	
17	Musconetcong Gorge Preserve Route 519 & Dennis Road, Holland Twp.	523		●								●			●		●										●	●	
18	Musconetcong Mountain Preserve Ellis Road, Holland Twp.	227		●								●			●		●										●	●	
19	Point Mountain Reservation Penwell & Point Mountain Roads, Lebanon Twp.	1264		●			●					●			●		●										●	●	
20	Rockaway Creek Preserve Halls Mill & Oldwick Roads, Tewksbury Twp.	75	U	N	D	E	V	E	L	O	P	E	D														●	●	
21	Schick Reserve Hickory Corner & Schick Roads, Alexandria Twp.	311		●			●					●			●		●										●	●	
22	Sourland Mountain Preserve Rileyville Road, East Amwell Twp.	388		●			●					●			●		●										●	●	
23	South Branch Reservation																												
	Arches Section Route 513 & Arch Street, High Bridge Boro	3					●													●							●	●	
	Assiscong Marsh Section River Road, Raritan Twp.	43																									●	●	
	Melick's Bridge Section Hamden Road, Clinton & Franklin Twp.	92		●			●					●			●		●										●	●	
	Pine Hill Section Pine Hill Road, Franklin Twp.	26		●			●					●			●		●										●	●	
	Riverfield Section Route 31, Clinton Twp.	25		●			●					●			●		●										●	●	
	Stanton Station Section Stanton Station Road, Raritan Twp.	190		●			●					●			●		●										●	●	
	Sunnyside Section Kiceniuk Road, Clinton Twp.	66		●			●					●			●		●										●	●	
	Valinsky Section River Road, Clinton & Franklin Twp.s	65					●					●			●		●										●	●	
	Wings Section Deerpath Road, Readington Twp.	90		●			●					●			●		●										●	●	
	Woodfern Section Higginsville Road, Readington Twp.	24		●			●					●			●		●										●	●	
	Additional Sections Califon, Clinton, & Raritan Twp.s	357	U	N	D	E	V	E	L	O	P	E	D														●	●	
24	South County Park	252	U	N	D	E	V	E	L	O	P	E	D														●	●	
	Fairground Section Routes 179 & 202, East & West Amwell Twp.s	89	S	C	H	E	D	U	L	E	D																●	●	
25	Teetertown Preserve Pleasant Grove Road & Hollow Brook Road, Lebanon Twp.	305		●			●					●			●		●										●	●	
26	Tower Hill--Jugtown Complex Mountainview & Mine Roads, Bethlehem Twp.	683					●					●			●		●										●	●	
	Charlestown Greenway Section Mine & Ludlow Station Rds., Bethlehem Twp.	156	U	N	D	E	V	E	L	O	P	E	D														●	●	
	Van Leight Management Area Mine Road, Bethlehem Twp.	55	U	N	D	E	V	E	L	O	P	E	D														●	●	
27	Turkey Top Preserve Sharrer Road, Lebanon Twp.	244	U	N	D	E	V	E	L	O	P	E	D														●	●	
28	Union Furnace Preserve Van Sycles Road, Union Twp.	170					●					●			●		●										●	●	
29	Uplands Reserve Barton Hollow & Altamont Roads, Raritan Twp.	100					●					●			●		●										●	●	
30	Wescott Preserve Raven Rock-Rosemont Road, Delaware Twp.	179					●					●			●		●										●	●	
	Total Division of Parks & Recreation Acreage	9078																											

\* park permit required

accessible features

## HUNTERDON COUNTY DIVISION OF PARKS & RECREATION

### OFFICE HOURS

Monday to Friday, 8:00 AM to 4:30 PM  
Location: 1020 Route 31, Lebanon (Clinton Township)

**PHONE:** (908) 782-1158

**WEBSITE:** [www.co.hunterdon.nj.us/479/Parks-Recreation](http://www.co.hunterdon.nj.us/479/Parks-Recreation)  
Like "Hunterdon County Parks" on facebook.

### MISSION STATEMENT

The Hunterdon County Division of Parks and Recreation is dedicated to preserving open space and natural resources, providing safe parks and facilities, and offering educational and recreational opportunities, all contributing to an enhanced quality of life for present and future generations.

### MODIFICATION STATEMENT

The Hunterdon County Division of Parks and Recreation welcomes all individuals to participate and enjoy our parks, facilities, and recreational programs. Reasonable modifications, individual adaptations, and support will be provided for persons of all abilities, to encourage everyone to benefit equally from their choice of leisure activities. Individuals requesting modifications shall describe what they need to use the service. Whenever feasible, please make the request in advance, before the modification is needed to access the service. Each request will be assessed individually.

### RESERVABLE FACILITIES

**ARBORETUM:** Two Gazebos

**DEER PATH PARK:** Two Pavilions, Gazebo, & Softball Field

**COURT STREET PARK:** Gazebo/Bandstand

**ECHO HILL PARK:** Main Lodge & Group Campsite

**TEETERTOWN PRESERVE:** Group & Public Campsites

To reserve a facility, contact the park office.

For information on each park, visit our website.

### PROGRAM REGISTRATION INFORMATION

For in-person programs, fill out the program registration form and medical record on the last pages of this brochure. The medical record can be filled out once, and will be kept on record for future programs.

OR.... visit our website for the forms.

Mail your completed forms with payment to:

Hunterdon County Division of Parks & Recreation  
P.O. Box 2900, Flemington, NJ 08822-2900

OR... Drop off your forms and payment at the Arboretum, 1020 Highway 31 North, Lebanon, NJ 08833. After hours, there is a door slot (**exact cash or check only**).

### CANCELLATION POLICIES:

You will be notified by phone if we cancel a program and you will receive a full refund. Programs are designed for all types of weather and participants should dress appropriately. Cancellations by participants must be in writing, and cancellations made less than one week prior to program will **NOT** receive a refund.

## VISITOR SERVICES STAFF



Laura Bush: [lkroon@co.hunterdon.nj.us](mailto:lkroon@co.hunterdon.nj.us) (back left)

Liz Fulmer: [lfulmer@co.hunterdon.nj.us](mailto:lfulmer@co.hunterdon.nj.us) (back middle)

Debra Reed: [dreed@co.hunterdon.nj.us](mailto:dreed@co.hunterdon.nj.us) (back right)

Tom Sheppard: [tsheppard@co.hunterdon.nj.us](mailto:tsheppard@co.hunterdon.nj.us) (front left)

Patrick Eckard: [peckard@co.hunterdon.nj.us](mailto:peckard@co.hunterdon.nj.us) (front right)

## AFFILIATED ORGANIZATIONS

**ARC OF HUNTERDON COUNTY** [archunterdon.org](http://archunterdon.org)

**HUNTERDON FLUTTERWHEELS SQUARE**

**DANCE CLUB** [hunterdonflutterwheels.nnjgsda.org](http://hunterdonflutterwheels.nnjgsda.org)

**HUNTERDON HIKING CLUB**

[hunterdonhikingclub.org](http://hunterdonhikingclub.org)

**NJ BEEKEEPERS ASSOCIATION** [nwnjba.com](http://nwnjba.com)

**TRAVIS MANION BATTALION, US SEA CADET  
CORPS OF HUNTERDON COUNTY**

[travismanionbattalion.org](http://travismanionbattalion.org)



Heron Glen has quickly positioned itself as one of New Jersey's finest public golf facilities. From junior camps to leagues, we offer

programs for every golfer out there. For your family outing or an afternoon spent with friends, we invite you to see why so many refer to Heron Glen as the course they call home. Our facility offers a beautiful 18-hole golf course, pro shop, driving range, and putting green. For more information, please visit our website at [www.hेरonglen.com](http://www.hेरonglen.com) or call at (908) 806-6804.

Heron Glen Golf Course  
110 US Highway 202/Route 31, Ringoes, NJ 08551



# HUNTERDON COUNTY DIVISION OF PARKS & RECREATION



## MEDICAL RECORD

Once the medical record is on file, we can use the same medical record for all subsequent programs.  
If your medical history has changed, please submit a new medical record.

Participant's Name \_\_\_\_\_ Gender (optional) \_\_\_\_\_

Today's Date \_\_\_\_\_ Participant's Date of Birth \_\_\_\_\_

Parent/Guardian (for minor) \_\_\_\_\_

Phone (h) \_\_\_\_\_ (w) \_\_\_\_\_ (c) \_\_\_\_\_

Address \_\_\_\_\_  
Street Town State Zip

E-mail \_\_\_\_\_  Check here to be added to our E-mail List.

### EMERGENCY CONTACT(S) – AT LEAST ONE CONTACT WHO IS NOT A PARENT/GUARDIAN

Name \_\_\_\_\_ Relationship \_\_\_\_\_ Phone \_\_\_\_\_

Name \_\_\_\_\_ Relationship \_\_\_\_\_ Phone \_\_\_\_\_

Physician(s) Name and Number \_\_\_\_\_

List all known allergies \_\_\_\_\_

Describe allergic reaction(s) and how it is managed \_\_\_\_\_  
\_\_\_\_\_

Medical issues \_\_\_\_\_

Current medications \_\_\_\_\_  
\_\_\_\_\_

\_\_\_\_\_ (Parks staff do not administer non-emergency medication)

Health Insurance Provider \_\_\_\_\_ Policy number \_\_\_\_\_

Please describe any other relevant conditions or information that we should know \_\_\_\_\_  
\_\_\_\_\_

### Terms of Agreement: Please initial next to all statements.

Waiver: I hereby waive and release all rights and claims for damages against the Hunterdon County Division of Parks and Recreation, County of Hunterdon, their employees and volunteers for all injuries or illness which may be sustained by the herein named participant while participating in the program. I understand the content of the program and the risks of personal injury therein. \_\_\_\_\_

Medical Release: In the event of injury or serious illness, and a parent/guardian cannot be reached (and/or if there is a medical emergency requiring immediate action), I give permission for Hunterdon County Division of Parks & Recreation staff to seek medical attention and to release all information contained in this document or known to Parks staff. \_\_\_\_\_

Photo Release: I authorize and acknowledge that I or my child may be photographed and/or videotaped for educational and publicity purposes (Website, Facebook, Instagram, Brochures, etc.). Photos and videos will not include names or personal information about any individual unless permission is granted. \_\_\_\_\_

Participant or Parent/Guardian Signature: \_\_\_\_\_ Date: \_\_\_\_\_



# HUNTERDON COUNTY DIVISION OF PARKS & RECREATION

DEPARTMENT OF ADMINISTRATIVE SERVICES

Mailing Address: PO Box 2900, Flemington, NJ 08822-2900

Office Location: 1020 State Highway 31, Lebanon, NJ

Telephone (908) 782-1158 Fax (908) 806-4057

E-mail: [parks@co.hunterdon.nj.us](mailto:parks@co.hunterdon.nj.us) Website: <https://www.co.hunterdon.nj.us/479/Parks-Recreation>



## PROGRAM REGISTRATION FORM

**THIS FORM MUST BE RETURNED WITH THE MEDICAL RECORD.**

Once the medical record is on file, we can use the same medical record for all subsequent programs. If your medical history has changed, please submit a new medical record.

PARTICIPANT'S NAME \_\_\_\_\_ RECEIPT # \_\_\_\_\_

TODAY'S DATE \_\_\_\_\_ DATE OF BIRTH \_\_\_\_\_ GENDER (optional) \_\_\_\_\_

PARENT/GUARDIAN NAME (if minor) \_\_\_\_\_

PHONE (h) \_\_\_\_\_ (w) \_\_\_\_\_ (c) \_\_\_\_\_

ADDRESS \_\_\_\_\_  
street town state zip

EMAIL ADDRESS \_\_\_\_\_  check here to be added to our email list

PROGRAM	DATE	LOCATION	TIME	FEE

**FEE ENCLOSED:** \$ \_\_\_\_\_. Make check payable to "Hunterdon County Parks." Fees are listed in the *Hunterdon Parks Harbinger* and on the website and are used to offset the cost of the program.

**IMPORTANT POLICIES:** (Participant or parent/guardian, please read and provide authorized signature.)

- 1. Cancellation requests must be in writing. NO REFUNDS WILL BE ISSUED FOR CANCELLATIONS MADE LESS THAN ONE WEEK PRIOR TO THE PROGRAM.**
2. Payment is due in advance of the program with this registration form & the medical record. Please mail it to the PO Box listed above or drop it off at the office location. Cash or check accepted.
- 3. I have read and understand these policies and consent to myself or my child participating in the above referenced program(s).**

\_\_\_\_\_  
(Signature of Participant or Parent/Guardian for minor) Date: \_\_\_\_\_  
(Revised 11-2022)

**ACCESSIBILITY STATEMENT:** It is the policy of the County of Hunterdon to provide reasonable modifications to persons with disabilities. Individuals requesting modifications shall describe what they need to use the service. Whenever feasible, please make the request in advance, before the modification is needed to access the service.